



Walking Holidays in Britain's most Beautiful Landscapes

t: 017687 72335

e: info@mickledore.co.uk

w: www.mickledore.co.uk



The Yorkshire Wolds Way

The Yorkshire Wolds offer a peaceful setting for a walking holiday away from it all. With rolling countryside and far reaching views, the trail follows good paths and tracks over higher ground, dipping in and out of the dry valleys which were carved into this landscape after the Ice Age, and which give the area its unique appearance.

The route begins on the Humber Estuary and follows a band of chalk which runs through a very rural and unspoilt corner of Britain, all the way to Filey on the North Coast. On a clear day the views over the patchwork of fields stretch for miles, to the Pennines and the North Yorkshire Moors. You may be able to spot the distinctive landmarks of York Minster, and your starting point, the Humber Bridge as you walk through this very rural landscape.

The hedgerows and grassy valleys are the perfect habitat for an abundance of wild flowers, birds and butterflies and you may be lucky enough to see Red Kites on the central part of the route.

The area also has a strong connection with the arts. Hull, close to the start of the route, was the UK City of Culture until 2020, if you fancy a rest day before starting your walk. Along the route, a project known as 'WANDER – Art on the Yorkshire Wolds Way' has seen a number of works of art springing up along the trail, so be sure to look out for these on your journey.



Why do this walk?

- A great introduction to long distance walking.
- Marvel at the mighty Humber Bridge, once the world's largest single span bridge.
- Soak up the peace and tranquillity of the Yorkshire countryside.
- Enjoy the landscape which inspired artist, David Hockney, and appreciate the artworks dotted along the way from the WANDER project.

Essential Info

Length 4 – 9 nights
Full Route Length 79 miles/ 127 km

Grade



Moderate

Of the National Trails we cover, this is one of the easiest. With a few short exceptions there are no 'serious' hills along the Way. This is a gentle, subtle route suitable for almost

all abilities and a great introduction to long-distance walking.

Terrain: Varied. Easy roads, tracks and paths over rolling countryside. A few ascents and descents with some short steep sections before the final descent into Muston and on to the coast at Filey.

What's it like underfoot? Pretty good. Well maintained paths throughout, although sections can get a bit muddy in wet weather.

How much up and down? Not too much! Mostly low-level through rolling countryside with some gentle ups and downs and a few short steep climbs.

Signposting: Good. The route is a National Trail and signposts displaying an acorn (which is the symbol of the National Trails) are to be found at regular intervals.

Navigation: Pretty straightforward. Well defined paths, and good signposting.

Route

Hessle to Market Weighton/ Goodmanham

Starting in Hessle, the route passes under the impressive Humber Bridge and along the Humber Estuary for a short way before heading inland. The estuary is a great place to see wading birds at all times of year, so it's a good idea to have your binoculars to hand!

Heading away from the river you soon get into the Wolds countryside with Welton Dale being the first taste of some of the wooded landscape to come. The pretty Wolds village of Welton is worth a short detour, as is its pub, the George and Dragon, with connections to the infamous Dick Turpin.

The route continues gently through fields and woodland bypassing the villages of Brantingham and South Cave, which both require a short detour from the official path. Beyond South Cave the Wolds



Walking Holidays in Britain's most Beautiful Landscapes

t: 017687 72335

e: info@mickledore.co.uk

w: www.mickledore.co.uk



gradually increase in height with views back to the Humber Estuary. Swin Dale is a typical example of a grassy dry valley, offering a pleasant change of scenery before ending your day at North Newbald, just off the route, or continuing onto higher ground above Market Weighton before a choice of paths presents itself.

Your decision may be determined by the location of your accommodation but otherwise you can opt for the only town of any size on the route, Market Weighton, birthplace of the Yorkshire Giant, William Bradley – look out for the plaque with his boot print – or, take the route through the smaller village of Goodmanham with its attractive church and village pub.

Market Weighton/Goodmanham to Thixendale

Whether you are walking from Market Weighton or Goodmanham the two paths converge at Londesborough. Large private estates are common in the Wolds and this is a lovely example right on the trail, with the path passing through parkland before reaching the pretty estate village.

You are now in the heart of the Wolds

with extensive views over the Vale of York. As the trail passes above Millington village you can see the distant Pennines and North York Moors (on a clear day, of course!). There are a few ups and downs to come next, some of the steepest so far, but nothing too strenuous, as you dip in and out of the dales which make up this lovely landscape.

If you are in need of refreshment, the village of Huggate is just off the trail, whilst the path continues on to deliver more classic Wolds countryside. The gentle valleys of Horse Dale and Holm Dale lead you to Fridaythorpe, the half way point of the walk, before you head on to Thixen Dale, a delightful valley, wending its way to the tiny and remote village of Thixendale. At times you may only have the birds and the sheep for company but also look out for sculptures from the Wander project as you go.

Thixendale to East Heslerton

After leaving Thixendale you'll soon reach the highest point on the Yorkshire Wolds Way, so expect lovely views as you continue to Wharram Percy, a village deserted in the late

1400s after the Black Death and a change in farming methods. The remains of the church and some earthworks can still be seen and it's a lovely spot to linger, maybe over a flask of coffee or a picnic lunch, but come prepared, as with so many parts of this trail, there are no services on the route.

The next few miles are a mixture of farm tracks and woodland through pleasant countryside, culminating in some lovely views from the escarpment just above the village of Wintringham. The Vale of Pickering extends before you with the North York Moors beyond, a fine sight as you descend to lower ground for a short way. Beyond Wintringham be ready for a short sharp climb back on to the escarpment and a change of direction as the path starts to head east towards the coast. Take time to appreciate the views from this higher ground for a couple of miles before leaving the path for East Heslerton, about a mile off route.

East Heslerton to Filey

There's a short climb back on to the trail from your overnight destination



Walking Holidays in Britain's most Beautiful Landscapes

t: 017687 72335

e: info@mickledore.co.uk

w: www.mickledore.co.uk



before the trail rolls along, down towards the village of Sherburn before rising and falling to Ganton, a pretty little village where the path skirts around the grounds of Ganton Hall, before climbing back up to Staxton Wold where you'll reach the RAF radar station.

The final stretch to Filey takes in more dry valleys, the last of which is Stocking Dale, a lovely wooded section before you start to descend towards the quiet seaside town. If you can drag yourself past the ice cream stands along the seafront, the official end of the path is on Filey Brigg, where you will find a stone marking the finishing point of both The Yorkshire Wolds Way and The Cleveland Way.

Looking back across Filey Bay you will get a great view of the chalk cliffs at Bempton which you have been walking towards all week and if you do have the time, it's worth adding an extra day to your holiday to visit the RSPB reserve at Bempton, as well as Flamborough Head with its dramatic cliffs and the impressive lighthouse.

Additional Days

We can arrange extra nights at any of the overnight stops, allowing for rest days, or giving you more time to explore the locality. We recommend Hessle, Millington and Filey:

Hessle

Add an extra day at Hessle to visit Hull. Its 10 minutes by train or 20 minutes on the bus. Hull is a port city in East Yorkshire where the River Hull meets the Humber Estuary. It was awarded the UK City of Culture in 2017 so take some time to explore its historic old town heart and cultural venues. All of the city's museums and galleries are free to enter so spend some time in the Ferens gallery or immerse yourself in Hull's maritime history at the Maritime Museum. Take a city tour or explore at your own pace following the famous Fish Trail, an impressive piece of public art comprising 41 pieces of sculpture set into the pavements, made from traditional materials and creating a tour of the historic Old Town. All the pieces are life size fish, from a tiny anchovy to a 10ft ray.

Millington

There are few towns and villages on the route – Millington itself is quite a remote village, however the nearby historic market town of Pocklington has plenty to entertain you. The church dates back to before the 15th century and there are lovely independent shops and boutiques. The renowned gardens at Burnby Hall offer peace and tranquillity with many different gardens and lakes set in 9 acres of woodland, as well as a museum dedicated to the travels of the former owner of the estate, Major Percy Stewart, and the exhibits he collected from remote and unexplored regions, some of which have been recognised by UNESCO as being of international importance. It is also possible to take a bus to the historic city of York from Pocklington. It's about an hour each way if you feel like travelling further afield and exploring more of what Yorkshire has to offer. If you would like a rest day at this point in your walk, please let us know and we will book your accommodation in Pocklington rather than in Millington and transfer you to and from the route.



Walking Holidays in Britain's most Beautiful Landscapes

t: 017687 72335

e: info@mickledore.co.uk

w: www.mickledore.co.uk



Getting There and Away

General travel information on the Yorkshire Wolds area will be in your holiday pack including train and bus timetables where available.

Detailed instructions on getting to your first night's accommodation by car, or on foot from the nearest train or bus station, will also be included in the holiday pack on individual accommodation maps.

To view train times please visit www.qjump.co.uk where you can also purchase tickets in advance. For information on bus timetables please visit www.traveline.info

If you require secure car parking whilst walking this route, please contact us for information.

Getting There:

By Air: The nearest International Airports are Leeds Bradford (LBA) or Manchester (MAN) – from either of these airports you can take a train to Hessle via Hull.

By Public Transport: There is a railway station at Hessle with frequent connections to Hull and Doncaster (for East Coast Mainline).

By Road: Hessle is located on the

northern side of the Humber Bridge, just off the roundabout where the A63 meets the A15.

Leaving from Filey:

By Public Transport: Regular train services operate from Filey to London Kings Cross via Scarborough and York and North to Edinburgh on the East Coast mainline. Trains also run direct to Hull (for Hessle).

By Road: Filey is located on the A1039, just off the A165 Scarborough to Bridlington road.

How our holidays work

We specialise in self-guided walks because we think it's the best way to really experience local landscapes, cultures and history. You walk under your own steam, at your own pace, safe in the knowledge that we have organised everything, and help is only a phone call away. We book all your accommodation, move your luggage between overnight stops, provide you with maps and guidebooks and all the details you need for a successful holiday. You just turn up and walk!

Inbuilt Flexibility

Our holidays are designed to be flexible and can therefore be tailored to suit your requirements. If you're looking for something different, or extra, from the holidays described here, give us a ring and we'll do our best to please.

You can start on any day you like and we can arrange extra nights at any of the overnight stops allowing for rest days, or giving you more time to explore the locality. You can book part of a walk if you don't have the time to complete the entire distance.

How to Book

Once you have decided which holiday you wish to book, please fill in the form at the back of this brochure which can then be emailed, posted or faxed to us. We will get in touch with you once we have received your booking to confirm your holiday details.

Alternatively, you can either book online using our website at www.mickledore.co.uk or telephone us during office hours.



Walking Holidays in Britain's most Beautiful Landscapes

t: 017687 72335

e: info@mickledore.co.uk

w: www.mickledore.co.uk



Accommodation

Good accommodation and friendly hosts are an essential part of any holiday. We understand this and go out of our way to find the best. We put a great deal of effort into hand picking our accommodation and matching it to individual customer requirements. In selecting the accommodation, we look for helpful, friendly hosts with good quality, characterful accommodation close to the trail. For example, over the course of your trip you might stay in a village inn, a bed and breakfast in a converted barn, a Victorian guest house, and on a working farm.

We always try to arrange en suite accommodation, i.e. rooms with their own bathrooms, for each night of your stay. However, in some of the more remote locations accommodation is limited and occasionally we may have to book rooms with shared bathrooms for one or two nights of your holiday, (especially if the booking is made at short notice), but we will always let you know if this is likely to be the

Single Rooms We are happy to book single rooms on this walk but cannot normally book more than two for any one group. Single room bookings include a supplement.

What We Provide

All Holidays

Accommodation Overnight Bed and Breakfast accommodation in selected hotels, farmhouses, village inns, guest houses and family B&Bs.

Full English or Continental breakfast.

Guidebook A guidebook with route information, maps, photos and background information.

Information of Services Along the

Route A comprehensive service Info sheet, including services such as cash points, banks, post offices, village shops, inns, cafés and taxis.

Maps 1 waterproof 1:40000 Harvey map covering the whole route.

Personal Itinerary A personal itinerary setting out each overnight stop, including large scale maps of each accommodation, to ensure you find it easily.

Emergency Telephone Support If you get in to difficulties during your holiday, we are always available to help, even out of office hours.

15% discount at Cotswold Outdoors

We will issue you with a 15% Discount Card valid at all Cotswold Outdoor stores, and online, for the whole year on confirmation of your booking.

Options

Luggage Transport We will transfer your luggage between each overnight stop – leave your luggage at the accommodation when you set off in the morning, it will be moved on to your next B&B. You only need to carry a small day sack with the clothes and provisions you require during the day's walk. We ask you to limit your luggage to one bag per person, up to 18kg.

Packed Lunches Provided for each day's walking and recommended on this holiday as there will not always be a handy shop or café on the route.

Off Road Parking If you are travelling by car we can usually arrange off road parking for the duration of your trip. (There may be a small charge for this).



Walking Holidays in Britain's most Beautiful Landscapes

t: 017687 72335

e: info@mickledore.co.uk

w: www.mickledore.co.uk



Arrangement of return transport We can also arrange your transfer back to your car, (or advise you when public transport is a better option!)

What's not included

Evening Meals Your evening meal isn't included in the package, but we include full details and recommendations for each evening meal in your itinerary. You will normally be within walking distance of a pub and/or restaurant, or where there is good food available at the accommodation, we'll book that for you. Allow about £20.00 per night.

Transport to the start & away from the finish Taxi or bus transport if you need to miss a stage (but we'll help you organise it if you need help)

Travel Insurance Even if you are based in the UK travel insurance is worth having.

Prices

Detailed prices for all our holidays are available on the website.
www.mickledore.co.uk.

About Mickledore

Mickledore Travel is based in Keswick at the heart of the English Lake District. We are one of the leading specialists in self-guided walking and cycling holidays in the UK, and provide a friendly, professional and flexible service.

We are walkers and cyclists ourselves, so it really matters to us that you have a good holiday. We are still a small business, with a lot of local knowledge, and personal enthusiasm for the outdoors. If you've got any queries, we're always happy to help, so don't hesitate to pick up the phone or drop us an email, or call in and see us if you're in Keswick.

We specialise in UK holidays, and by concentrating on what we consider the best routes, we get to know the trails, accommodation, and local area intimately.

- All your accommodation has been carefully selected and is regularly monitored.
- We listen to you and tailor each holiday to meet your requirements.
- We have an excellent level of customer service.

- We have 15 years' experience, and very high levels of customer satisfaction.
- Peace of mind – help is only ever a telephone call away.
- We're all outdoor enthusiasts – we know what makes a good holiday, and we want you to have one!
- 15% discount card for all your outdoor equipment purchases from Cotswold Outdoors.
- 100% financial protection – in the very unlikely event of Mickledore's financial failure, you receive a full refund.

Financial Protection

Your payments are fully protected against our financial failure. We are members of the Association of Independent Tour Operators (AITO), and the Association of British Travel Agents (ABTA). We have arranged bonding through ABTA. This means that in the unlikely event of our financial failure, any monies you have paid to us will be refunded. This bonding is fully compliant with the Package Travel Regulations and provides 100% financial protection.

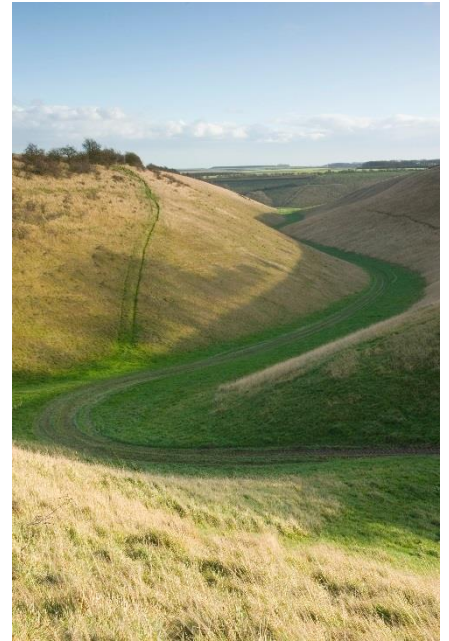


Walking Holidays in Britain's most Beautiful Landscapes

t: 017687 72335

e: info@mickledore.co.uk

w: www.mickledore.co.uk



AITO Quality Statement

Mickledore Travel is a member of the Association of Independent Tour Operators. The Association represents Britain's leading independent tour operators. It promotes high levels of professionalism and a shared concern for quality and personal service. The Association encourages the highest standards in all aspects of tour operating.

Mickledore Travel abides by AITO's Code of Conduct and adheres to the Quality Charter which can be viewed at www.aito.com. Visit the website to find out more about the Association or call 020 8744 9280.



Our Itineraries

[Turn over for our Booking form →](#)



The Yorkshire Wolds Way – Hessele to Filey – 87 miles/ 140 km

Hessele to Filey in 5 walking days Walking Code: YW6				Hessele to Filey in 8 walking days Walking Code: YW9		
		Mile	km		Mile	km
Day 1	Travel to Hessele for your first nights accommodation			Travel to Hessele for your first nights accommodation		
Day 2	Hessele to North Newbald	19	31	Hessele to South Cave	14	23
Day 3	North Newbald to Millington then transfer to Pocklington	16	26	South Cave to Goodmanham	13	21
Day 4	Transfer back to Millington then walk to Thixendale	12	19	Goodmanham to Millington then transfer to Pocklington	10	16
Day 5	Thixendale to East Heselton	18	29	Transfer back to Millington then walk to Thixendale	12	19
Day 6	East Heselton to Filey	19	31	Thixendale to Wharrah le Street then transfer to Malton	6	10
Day 7	Depart from Filey after breakfast			Transfer back to Wharrah le Street then walk to East Heselton	12	19
Day 8				East Heselton to Staxton then transfer to Filey	9	14
Day 9				Transfer back to Staxton then walk to Filey	11	18
Day 10				Depart from Filey after breakfast		

Note about transfers: There are few towns and villages along the trail and it is not always possible for us to book accommodation close to the route. If you are considering this itinerary you need to be prepared to be transferred to and from your accommodation on several nights of your holiday.

The locations below are locations along the trail where you will either stay or be collected for your transfer to your accommodation. Distances are typical walking distances between your accommodations and/or your pick up points.



Walking Holidays in Britain's most Beautiful Landscapes

t: 017687 72335

e: info@mickledore.co.uk

w: www.mickledore.co.uk

Booking Form

Contact Details

Address: _____
Telephone: _____ Mobile / Alternative Tel: _____
Email: _____ Emergency Contact No: _____

Your Holiday

Holiday Name: _____ Holiday Code: _____ (Hadrian's Wall: Add an 'R' if starting in the West)
Date of First Night: _____ Date of Last Night: _____

Party Members

Luggage Transport	<input type="text"/>	No. Double Rooms	<input type="text"/>
Packed Lunches	<input type="text"/>	No. Twin rooms	<input type="text"/>
Off Street Parking (there is normally a charge for this)	<input type="text"/>	No. Single Rooms	<input type="text"/>
Transfer required (additional charge)	<input type="text"/>	No. Triple Rooms (Double & Single)	<input type="text"/>

Comments (special diets, other requirements, etc): _____

Payment

Holiday cost per person	<input type="text"/>	I enclose a cheque for the deposit value (GBP only, made payable to Mickledore Travel)	<input type="checkbox"/>
Rest Days	<input type="text"/>	I would like to pay by card (we will contact you to arrange this).	<input type="checkbox"/>
Total cost per person	<input type="text"/>	I would like to pay by bank transfer (we will contact you to arrange this).	<input type="checkbox"/>
Number in group	<input type="text"/>		
Total group cost	<input type="text"/>		
Deposit (20% of Total Cost)	<input type="text"/>	I confirm that the above details are correct and that I have read the terms and conditions available on the website.	
Single and solo supplements will be added where applicable.		Signed _____	Date _____
		Name _____	

How did you hear about Mickledore Travel: _____